

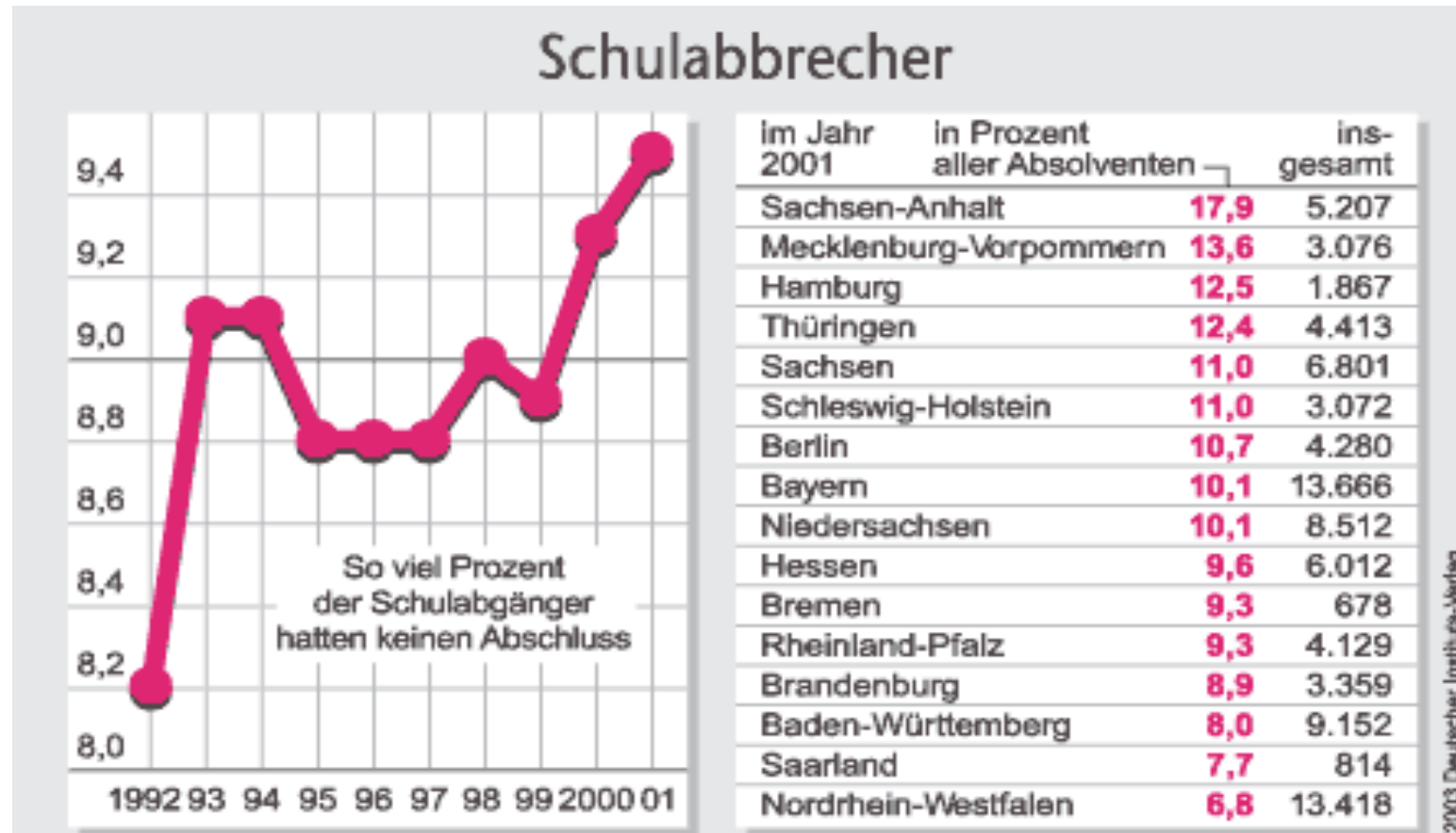
Dropouts in Germany

How many dropouts are there today and why are there so many?

Dropouts in Germany

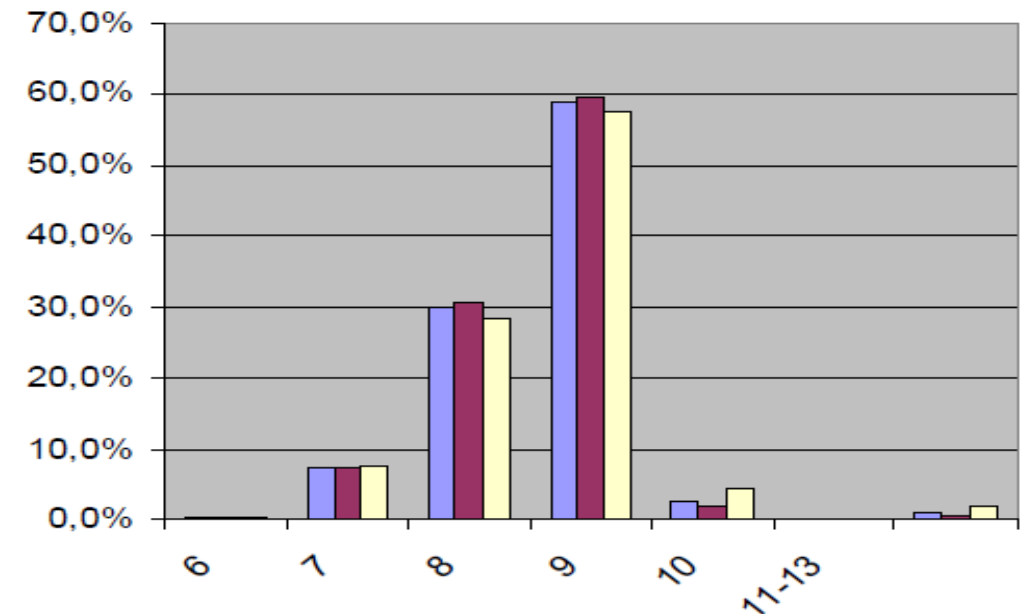
- The German Government wanted to reduce the number of dropouts by half until 2015.
- The number of dropouts was at 5.6%, which was still too high.
- Average age of dropouts is 18 years.
- Percentage of early school leavers in the west is much lower than in the east. 5.6% to 11.9%.

Dropouts in Germany



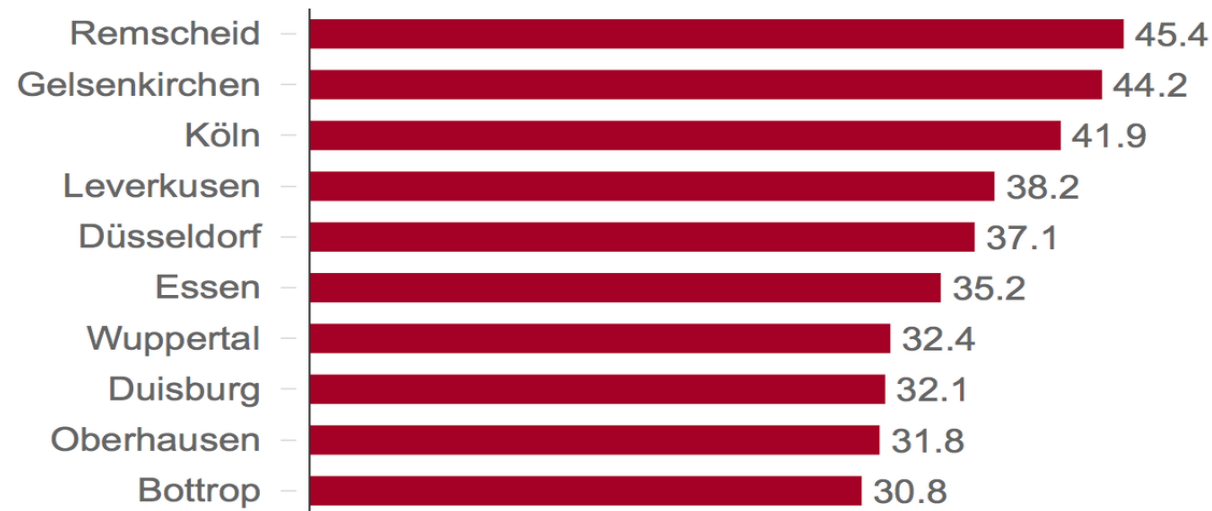
Dropouts in Germany

- Approximately 11 million students got their graduation in 2015.
- However, many did not.
- New goal: Inspire students to reduce the dropout percentage.
- Reason = gender
- There are 25% more boys than girls.



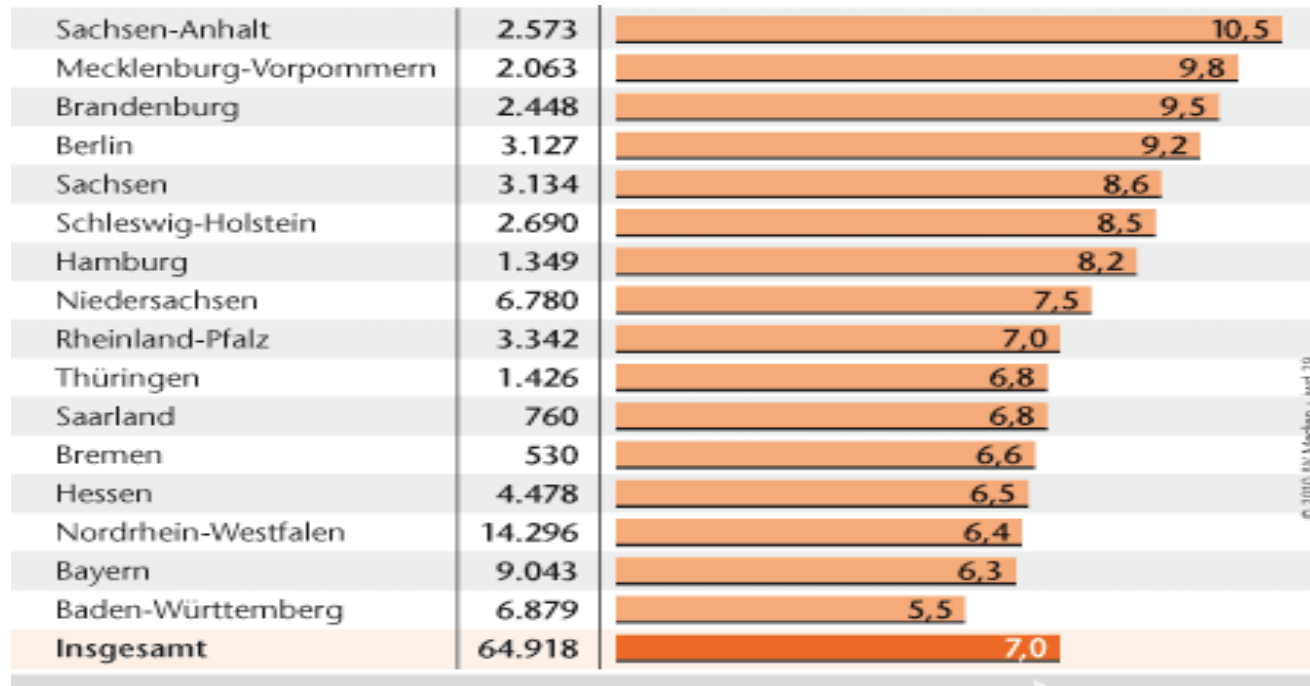
Dropouts in North-Rhine-Westphalia

- Last year 11 000 students left their schools without a graduation.
- The average in NRW is 5.4 %, examples: Bottrop 4%, Gladbeck 6%, Duisburg 8% and Gelsenkirchen 9%.
- Cities with the largest share of foreigners among dropouts:



Dropouts in North-Rhine-Westphalia

- In comparison to the other states in Germany
- NRW has one of the lowest numbers of dropouts:



Bielefeld's percentage of dropouts is 6.2

Dropouts in the region of OWL

- In OWL (East Westphalia-Lippe) the percentage of school dropouts is 4.85%, in 2012 there were 4.68%, so the school dropouts increased.
- Today Bielefeld has the most school dropouts in OWL with 6.18%.
- In 2012 the number was 5.74%, so it increased.
- The county of Paderborn has the lowest number with only 3.79% dropouts, less than 2012 with 4.0%.
- Herford has a number of 4.97%, more than in 2012, when it was 4.7%.

School dropouts in the district of Gütersloh

- AGE:
 - between 15 and 18
 - drop out of secondary schools
 - during puberty
- NUMBER:
 - 52 students drop out of technical schools
 - 8 students leave secondary schools
 - 21 students fail in grammar schools



the diagram is from 2014/15

Dropouts in the district of Gütersloh

- ETHNICITY:

- ethnicity does not influence the result of the statistic
- opinion from many professors

- GENDER:

- girls leave school more often than boys
- girls sometimes feel disadvantaged by peers
- number of male dropouts is increasing
- no big differences

